

Martin Imperial Trumpets

1933 – 1969


The Handcraft Imperial model trumpet was introduced in 1933 and replaced the Dansant as the top offering from Martin. These were available in three bore sizes, #1 (0.435"), #2 (0.453") and #3 (0.465").

The earliest example I have found is #106424 dating to 1933. This one had an unusual "MDM LRG" marking on the bell; likely for a medium-large bore size (D. Gibson collection).

1934 Catalog Image



1934 Catalog Description



The name Imperial fits perfectly the supreme excellence of these fine instruments. Built of the finest procurable materials and with painstaking care by thoroughly skilled and conscientious craftsmen who are paid by the day, not by the piece, they are singularly free from any of the impediments to perfect performance so often found in band instruments.

Valves and slides are of wear proof nickel silver, hand ground to perfect smoothness and air and water-tight fit. Bells made of yellow trumpet brass, hand hammered to perfect temper and resilience but still heavy enough to give the instrument an unfathomable depth of power through every register. Extremely flexible and susceptible to tone placing so that any player who will familiarize himself with an Imperial Martin Trumpet or Cornet can "sing" on it with perfect ease, each tone coming right where his ear anticipates it.



The new Martin logo.



Imperial only mouthpiece used 1933 – 1935.

Imperial #11145x c.1935 (bell on page 1)



#11391x c.1935



By 1936, Martin was using the same mouthpiece for all trumpets (top right photo).

#11500x c.1936



#11590x c.1936



Mouthpieces were sizes 8, 9, & 10 with 10 the smaller cup.



MARTIN

A new Imperial 37 model was advertised in December of 1937.

These had "37" added in the bell engraving.

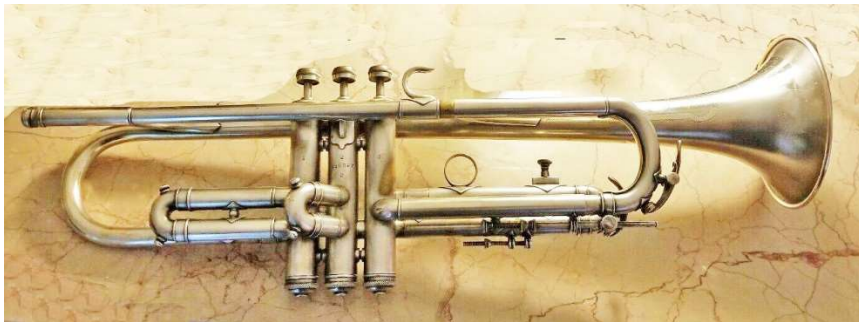
#11965x c.1937



#119660 c.1937 (author's photos below & top right)



#11992x c.1937 (below & 2nd on right)

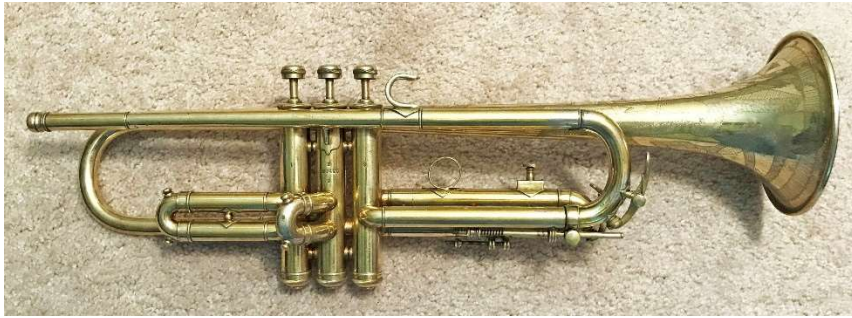


#12000x c.1937



Only the Imperial & Standard models were available in 1938.

#12147x c.1938 (author's photos below & top 3 on right)



#12338x c.1938 (2 below & bottom right)



#12344x c.1938



#12508x c.1938 with new lion engraving (below & top right)



#12634x c.1938 with new pinky hook and 3rd slide ring



#12729x bell only 2nd on right c.1939

#12895x c.1939



#12928x c.1939

#1347xx below c.1940



#1320xx c.1939



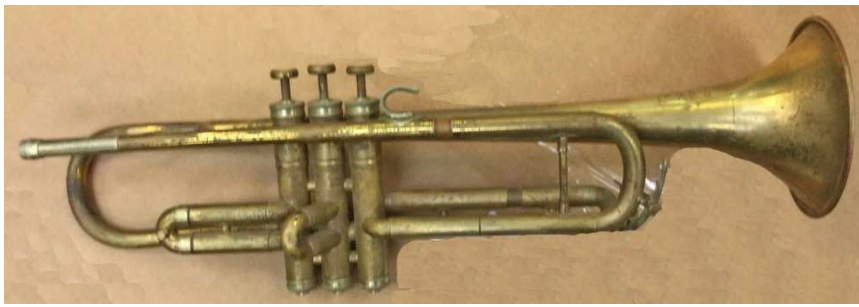
#13512x c.1940 (bell at right)

The Handcraft name was dropped after WWII.

1948 Catalog Image



#17280x c.1950



#1800xx c.1952



#18553x c.1954

By this time they had a simple bell engraving (2nd on right).



The list price for the Imperial in 1956 was \$150 in lacquer.



#19624x c.1957



#20200x c.1958



#20200x c.1958



In 1959, the Imperial listed for \$175.

#20989x c.1960 (below & top right)



Martin is sold to RMC on 12/30/61 at around #210000.

#21191x c.1961 with RMC mark



The Music Man movie was released in June of 1962 and Martin had an Imperial Music Man model.

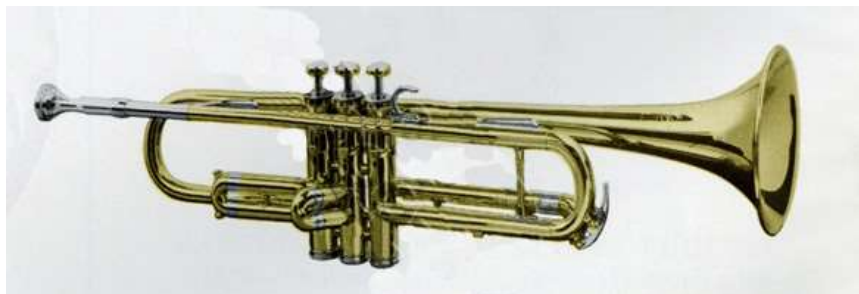
Imperial Music Man #21505x c.1962



Imperial Music Man model #21513x c.1962 (below & top right).



1962 Catalog Image



Martin was sold to Wurlitzer in June of 1964.
Serial numbers go up to 219xxx before switching to a
Wurlitzer sequence starting around 690xxx.

#70149x c.1964



#70150x c.1964



#70186x c.1964



#70296x c.1965



70648x c.1965



#70652x c.1965 (mouthpiece top right)



#71037x c.1966 & black Wurlitzer case



The highest example found is #717710 c.1968.
Wurlitzer closed the Martin factory in October of 1969.
The Martin name was sold to Leblanc in Kenosha.

